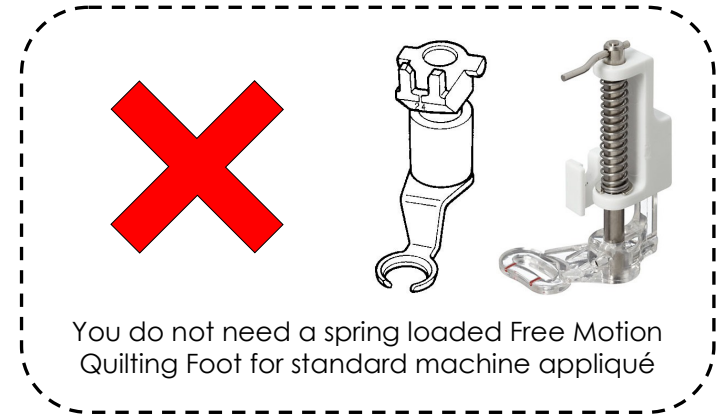


Machine Appliqué Foot Guide

If you are looking to try out machine appliqué you will need a foot for your machine that allows good visibility of the fabric edges that you are sewing over.

Below you will find some suggestions for a foot that you may consider purchasing. Try reputable sellers on ebay or your local sewing machine retailer or repair shop.



Clear Foot
(with wide opening)

Bernina



Brother



Janome



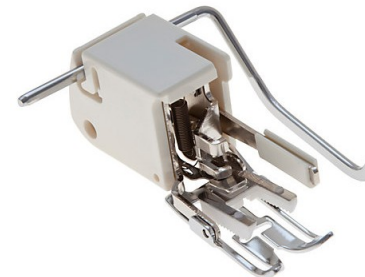
Singer



Open Foot
(or satin stitch foot)



Walking Foot



The above images are intended only as a guide as to the type of foot that can be used for machine appliqué. Always check compatibility between your sewing machine model and the foot you are planning to buy.